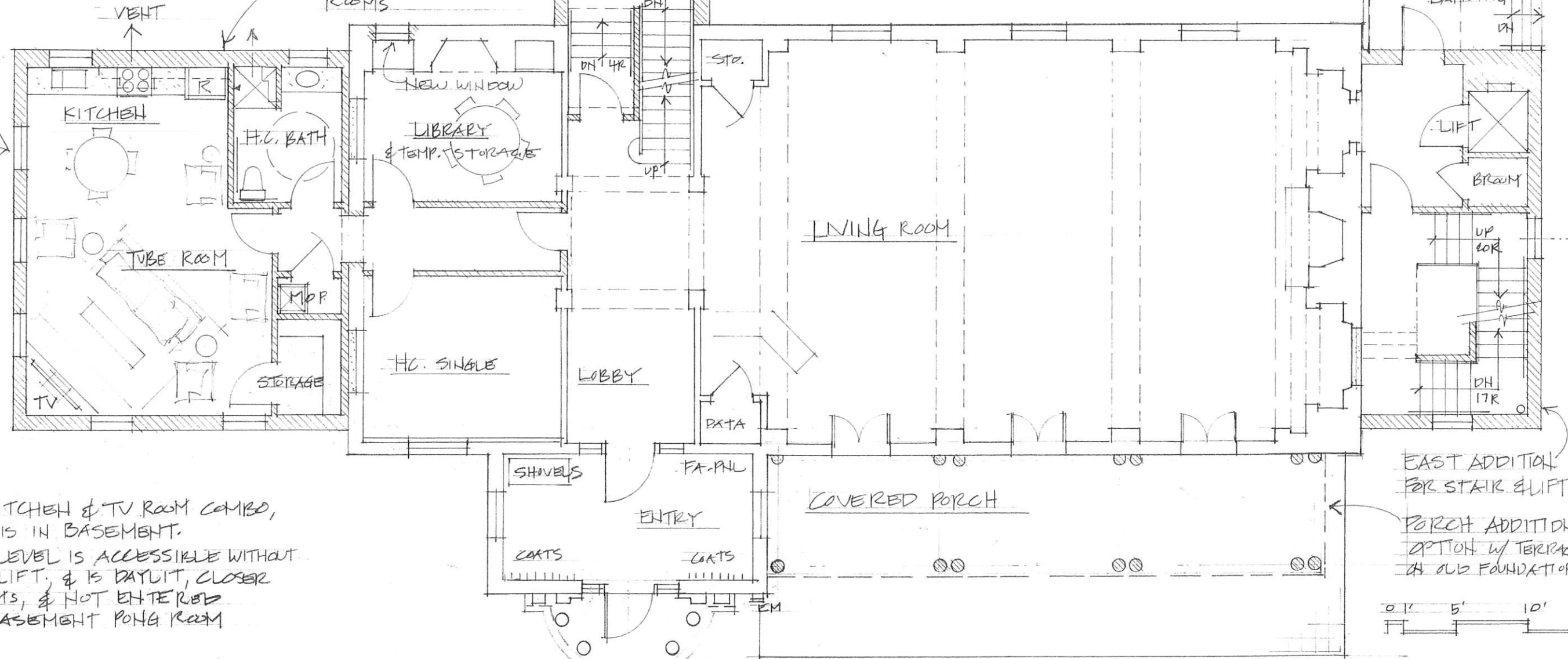


SHORT WINDOWS
ON W. & N. SIDES

WEST ADDITION
FOR PUMPKIN &
ROOMS

NORTH ADDITION
FOR STAIR



OPTION: KITCHEN & TV ROOM COMBO,
LAUNDRY IS IN BASEMENT.
PT FLOOR LEVEL IS ACCESSIBLE WITHOUT
USING THE LIFT, & IS DAYLIT, CLOSER
TO BEDROOMS, & NOT ENTERED
THROUGH BASEMENT PONG ROOM

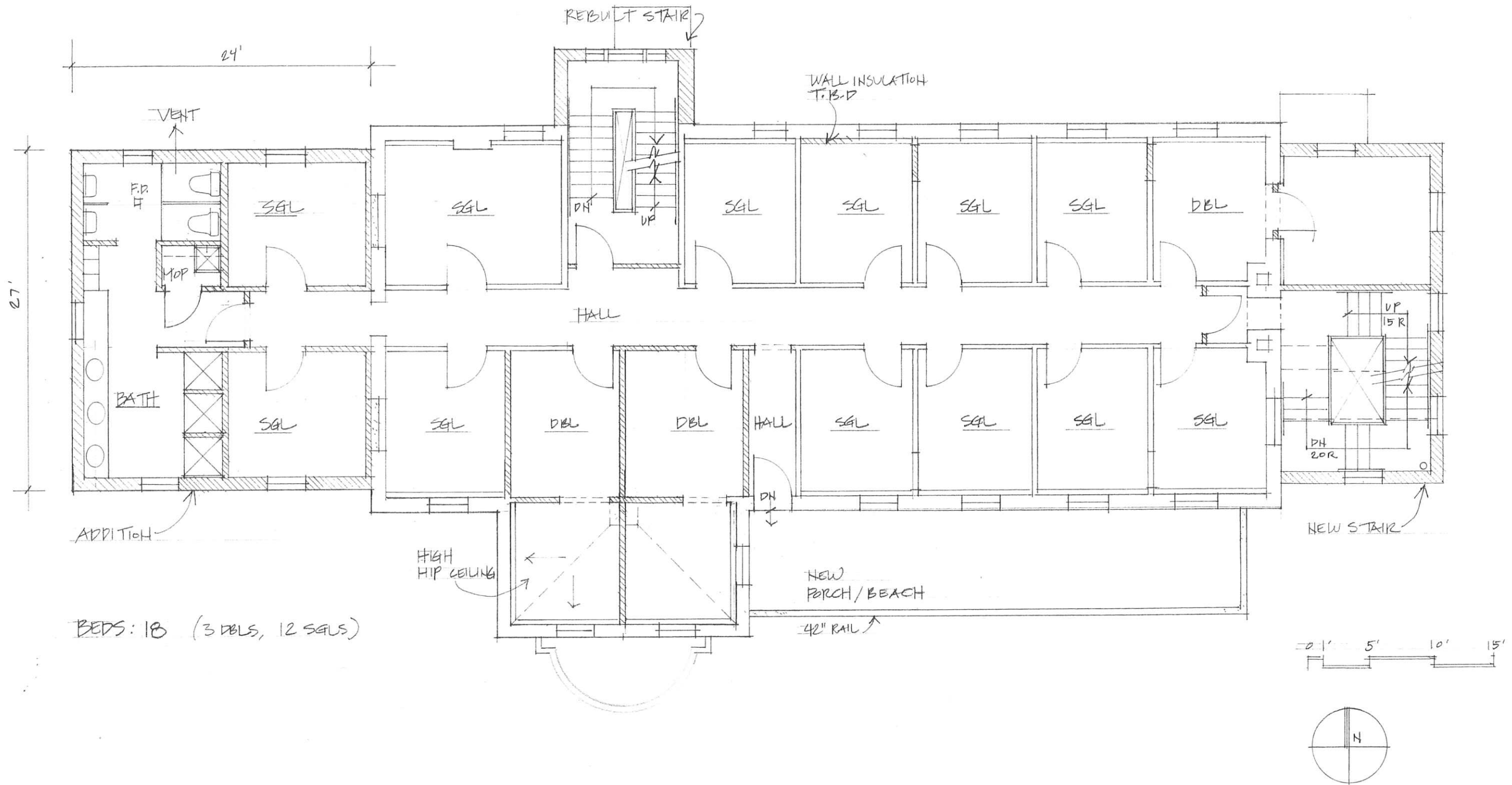
BEDS: 1 THIS FLOOR (SINGLE)

TOTAL BEDS: 23
13 SINGLE, 5 DOUBLE

EAST ADDITION
FOR STAIR & LIFT
PORCH ADDITION
OPTION w/ TERRACE
ON OLD FOUNDATION

ACCESSIBLE ENTRY
REBUILD EXISTING

	Sheet Issued:		<h1>TRI-KAP: RENOVATION & ADDITION PROPOSAL @ FIRST FLOOR</h1>	<h2>#1 WEBSTER AVENUE, HANOVER NH, DARTMOUTH COLLEGE</h2>	1114	A-1	
	1	8/25/11					REV.
	No.	Date					Issue



BEDS: 18 (3 DBLS, 12 SGLS)

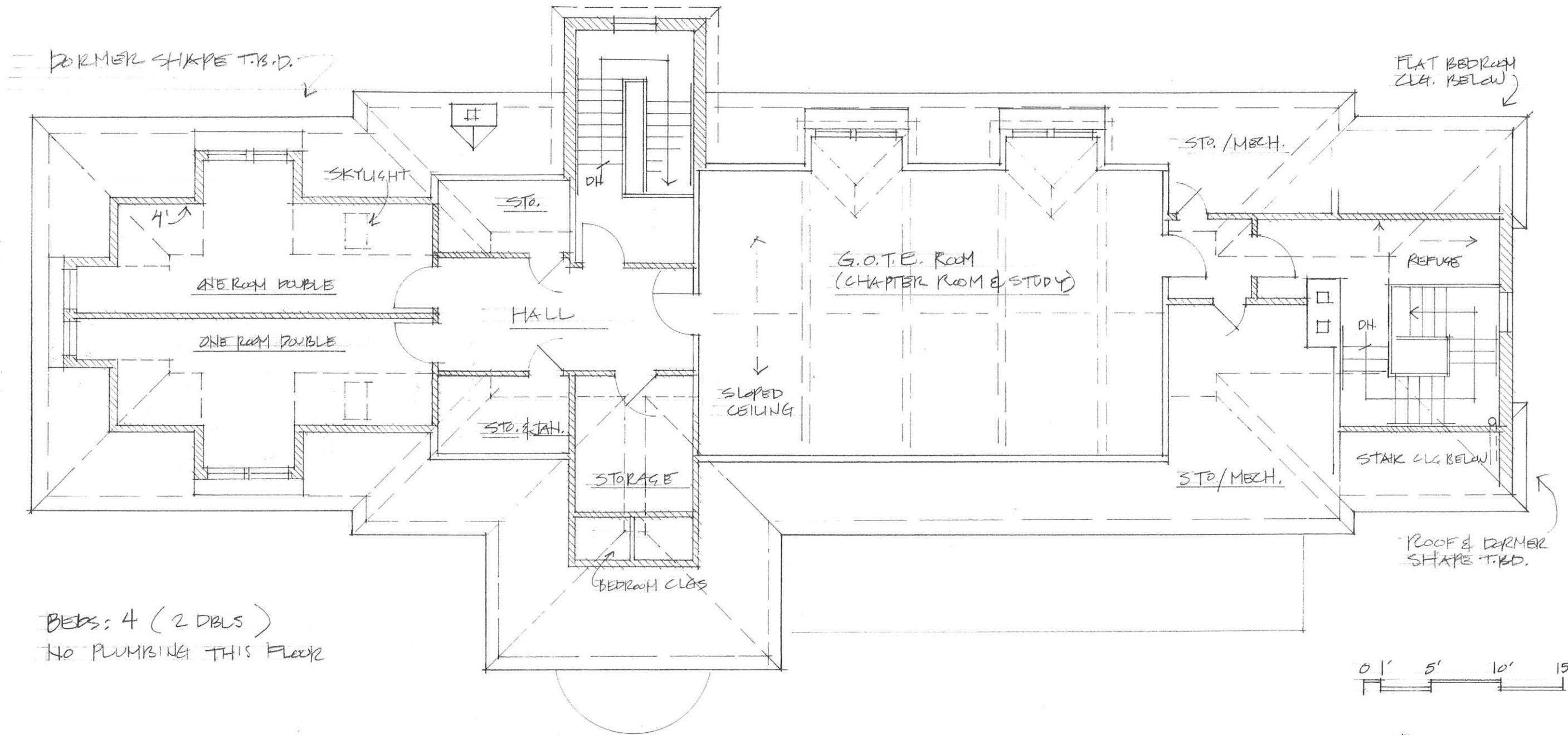
SMITH & VANSANT architects <small>15 River Road Norwich Vermont (802) 649-5515 smithandvansant.com © 2011 SMITH & VANSANT ARCHITECTS PC</small>	Sheet Issued:	
	1	8/25/11 REV.
	No.	Date Issue

TRI-KAP: RENOVATION & ADDITION PROPOSAL @ SECOND FLOOR

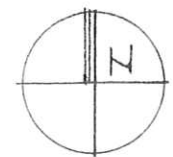
#1 WEBSTER AVENUE, HANOVER NH, DARTMOUTH COLLEGE

Project No.	1114
Drawn By	SER
Print Date	110825

A-2



BEDS: 4 (2 DBLS)
NO PLUMBING THIS FLOOR



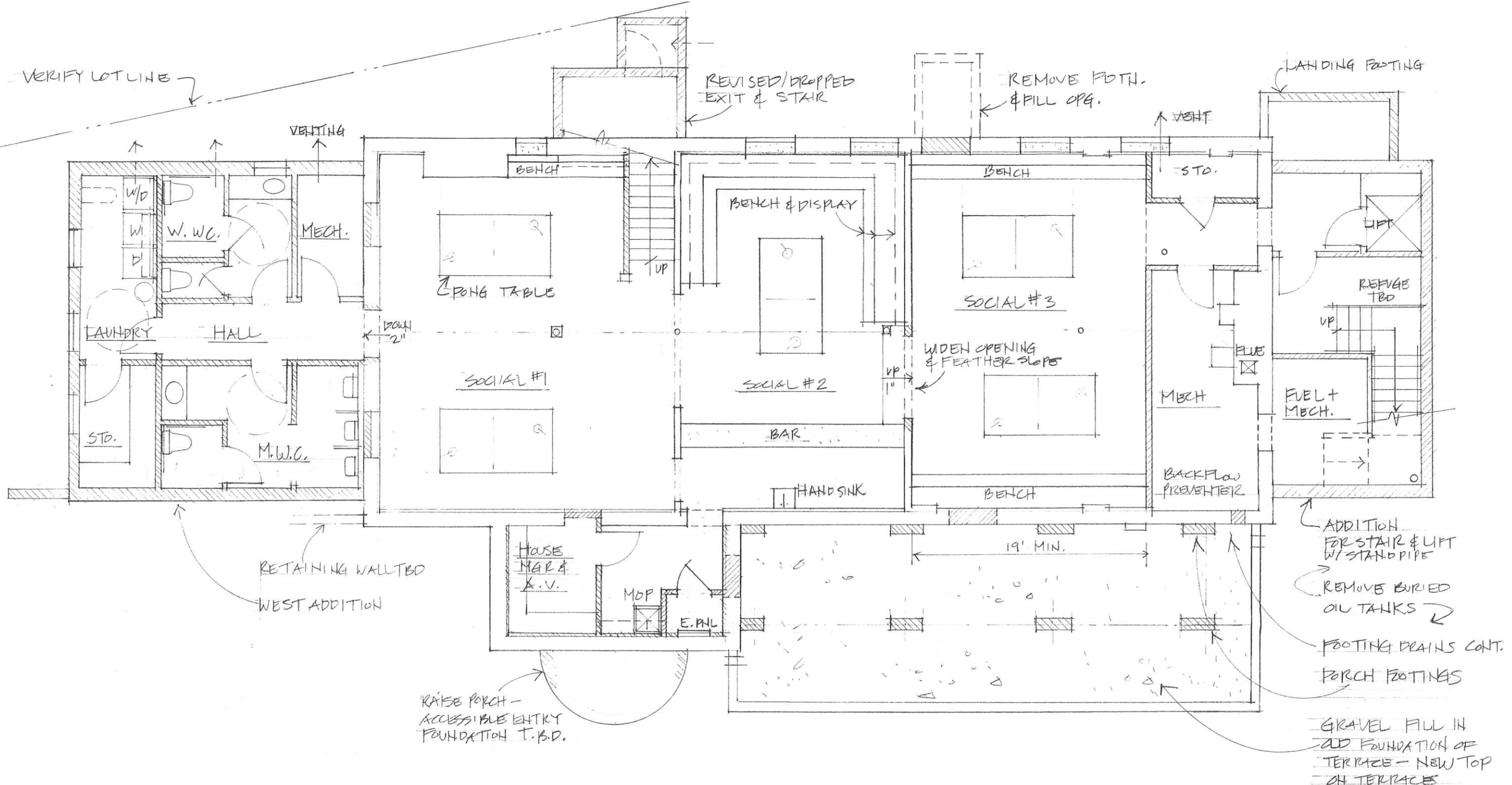
SMITH & VANSANT architects <small>15 River Road Norwich, Vermont (802) 649-5515 smithandvansant.com © 2011 SMITH & VANSANT ARCHITECTS P.C.</small>	Sheet Issued:	
	1	8/25/11 REV.
	No.	Date Issue

TRI-KAP: RENOVATION & ADDITION PROPOSAL @ THIRD FLOOR

#1 WEBSTER AVENUE, HANOVER NH, DARTMOUTH COLLEGE

VVA Project No.	
1114	
Drawn By	Inst. Date
SER	110825

A-3



SMITH & VANSANT architects <small>15 River Road - Norwich, Vermont (802) 649-5515 smithandvansant.com © 2011 SMITH & VANSANT ARCHITECTS P.C.</small>	Sheet Issued:	
	1	8/25/11 REV.
	No.	Date Issue

TRI-KAP: RENOVATION & ADDITION PROPOSAL @ BASEMENT

#1 WEBSTER AVENUE, HANOVER NH, DARTMOUTH COLLEGE

1114	A-4
Drawn By: SER Date: 110825	